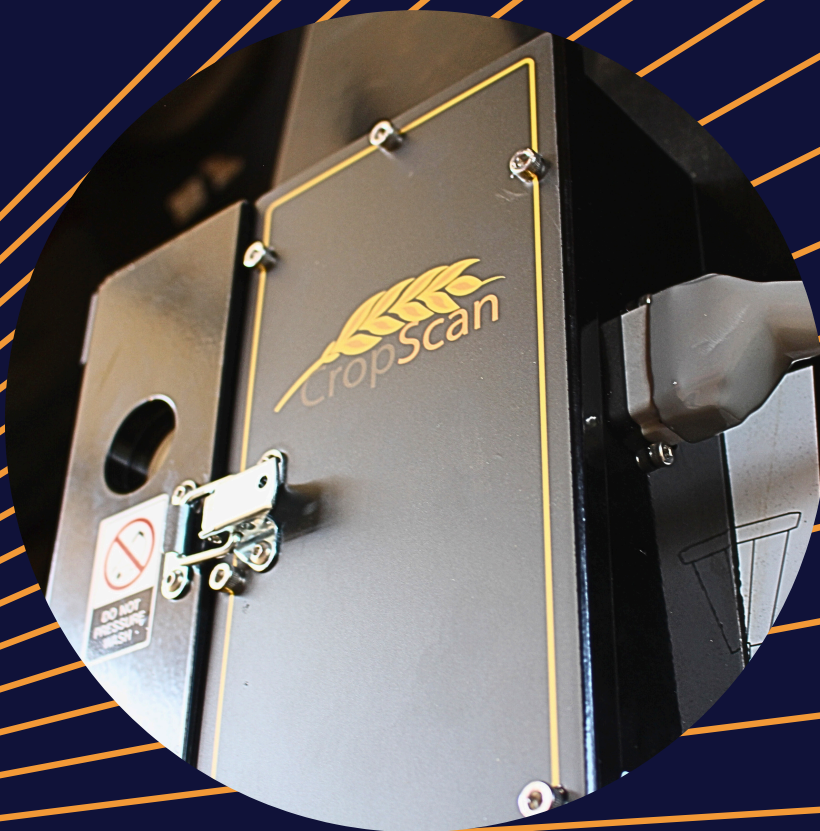




CropScan 4000VT

Fully ISOBUS Integrated
for Case IH Combines



MAXIMISE NITROGEN
EFFICIENCY WITH
REAL-TIME PROTEIN & GRAIN
QUALITY MAPPING



CropScan 4000VT

ISOBUS Integration



NEXT GENERATION NIR ON-COMBINE GRAIN ANALYSER

COMPATIBLE WITH Case IH COMBINES:

- AXIAL-FLOW 40 / 50 / 60 SERIES COMBINES
- AF SERIES COMBINES (AF9, AF10, AF11)



The Tech

Near Infrared (NIR) Transmission Technology is the world standard when it comes to measuring whole grains.

- New NIR ECU - Linux OS running ISOBUS Virtual Terminal on Pro 700/Pro 700 Plus and Pro 1200 Dual Monitors.
- Measure REAL-TIME Protein, Moisture, Oil, Fiber and Starch for all major crop types.
- 3-4 second scan rate for high resolution maps.
- CropScan is the only On-Combine Grain Analyser specifically designed for whole grains.



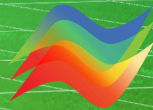
The Benefits

More than Protein - Measuring Protein indicates crop nitrogen uptake and utilisation leading to improved:

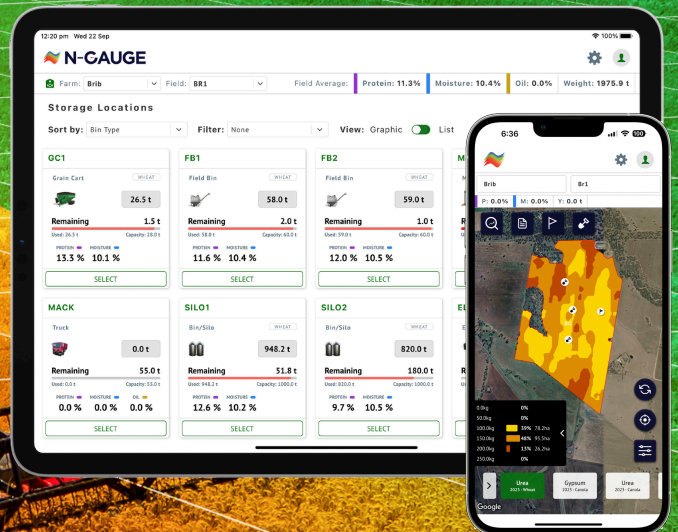
- Nutrition: Increase yields by optimising nutrient management with Protein and Yield maps.
- Identify where nitrogen was under-applied and over-applied.
- Efficiency: Accurate harvest moisture and protein for optimising grain delivery and storage.
- Sustainability: Maximise Nitrogen efficiency and ensure your fertiliser is where you need it.

PROTEIN TO PRESCRIPTION

Transform real-time protein data into variable rate
nitrogen decisions



N-GAUGE



N-GAUGE connects harvest data to decision-making, enabling real-time grain tracking and variable rate nitrogen management in one platform.

HARVEST MANAGER

5 Yr Subscription included

- Digital Grain Storage Management.
- Track and manage every tank load of grain from the field to delivery.
- Segregate and blend grain based on quality attributes.
- View Protein, Oil, Moisture and Yield Maps.

NUTRIENT MANAGER

1 Yr Subscription included

- From Harvest to Application.
- Generate variable rate prescription maps from harvest data.
- Reports and built-in analytics for Field Performance and Nutrient Removal.
- Create and send Rx prescriptions to your machinery platform.

MEASURE ➔ **ANALYSE** ➔ **APPLY**

TECHNICAL

SENSOR

KIT PART NUMBERS	CSC4H4000-1CIH (40/50/60 Series) CSC4H4000-2CIH (AF 9/10/11 Series)
WAVELENGTH	720-1100nm
POWER	12 VDC
SAMPLE SIZE	500ml
CYCLE RATE	3-4 seconds
OPERATING TEMP	10-50 °C (50-122 Degrees F)
DISPLAY	Virtual Terminal on Pro 700/Pro 700 Plus and Pro 1200 Dual Monitors.
CLOUD	CropScanAg Cloud API and N-GAUGE App
N-GAUGE API	Case IH FieldOps™
PLATFORM KITS	Case IH 40/50/60 Series and AF 9/10/11
GPS	NMEA 2000 ISOBUS/Serial GPS
WEIGHT	24 kg (53lbs)
SHIPPING	510 X 370 X 500mm (20.1 X 14.6 X 19.7 in)

APPLICATIONS

CALIBRATION	PLS (Partial Least Squares)
PARAMETERS	Protein, Moisture, Oil, Starch and Fiber
CROP TYPES	Wheat, Barley, Canola, Corn, Soybeans, Sorghum, Chick Peas, Lentils, Oats, Lupins, Rice, other grain types available on request



Website

cropscanag.com



Location

U16/16 Bernera Rd, Prestons,
NSW, 2170 Australia



Email

sales@cropscanag.com